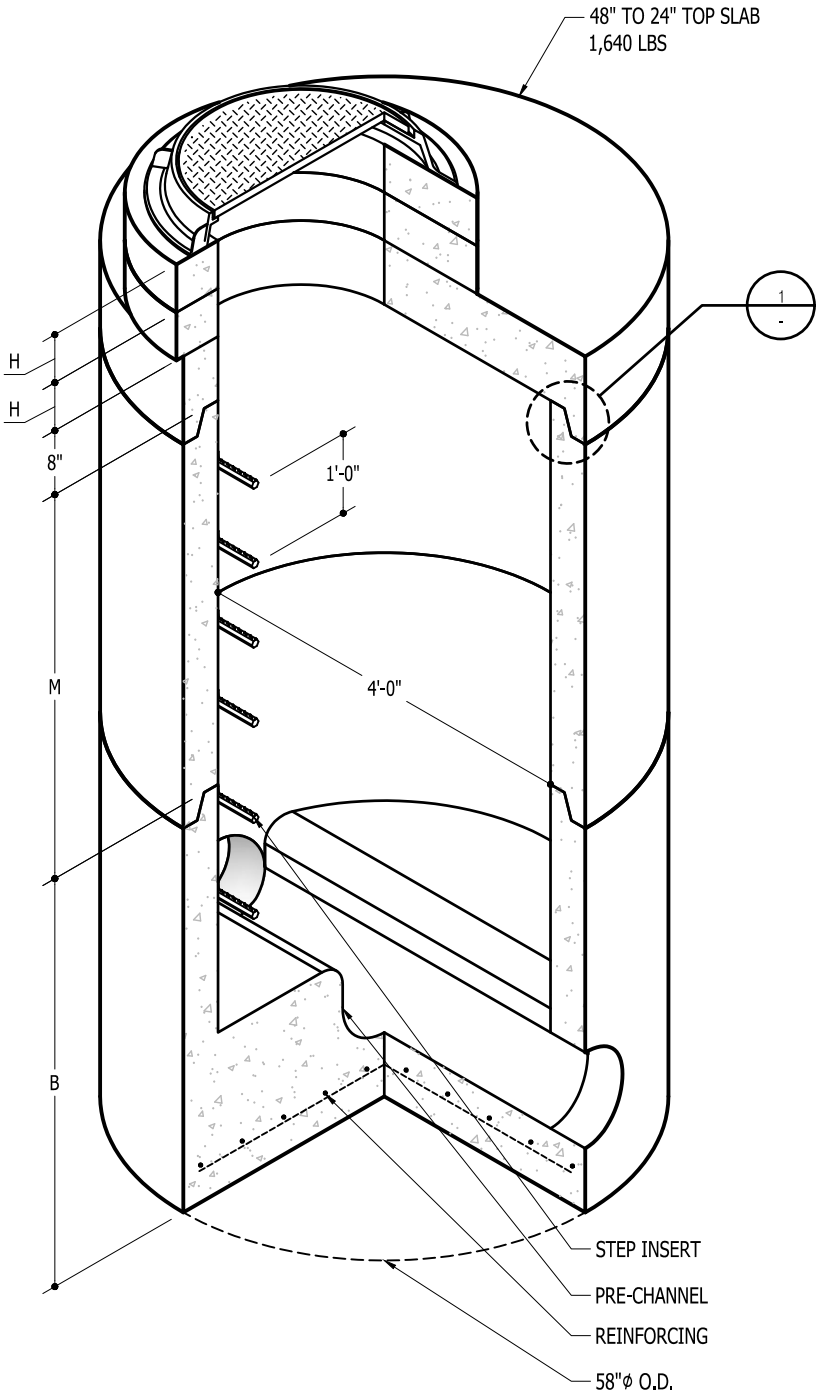


1 DETAIL



ADJUSTING RISERS (AS REQ'D.)

| | "H" | WEIGHT |
|---------|-----|---------|
| MAR24-2 | 2" | 83 LBS |
| MAR24-4 | 4" | 170 LBS |
| MAR24-6 | 6" | 250 LBS |

RISERS

| | "M" | WEIGHT |
|--------|-----|-----------|
| MH48-1 | 12" | 870 LBS |
| MH48-2 | 24" | 1,730 LBS |
| MH48-3 | 36" | 2,600 LBS |
| MH48-4 | 48" | 3,520 LBS |

BASE SECTION

| | "B" | WEIGHT |
|---------|-----|-----------|
| MH48X2B | 27" | 2,770 LBS |
| MH48X3B | 39" | 3,640 LBS |
| MH48X4B | 51" | 4,510 LBS |

NOTES:

1. MANHOLE ASSEMBLY CONFORMS TO ASTM-C478/W.S.D.O.T./A.P.W.A. STANDARD SPECIFICATIONS
2. ALL MANHOLE JOINTS SEALED WITH MASTIC OR RUBBER GASKET
3. REINFORCING AS PER WSDOT STANDARD PLAN
4. WEIGHTS ARE APPROXIMATE AND DO NOT INCLUDE PRE-CHANNEL OF WHICH VARIES (6" BASE SLAB ASSUMED)

S
A
N
I
T
A
R
Y

S
E
W
E
R