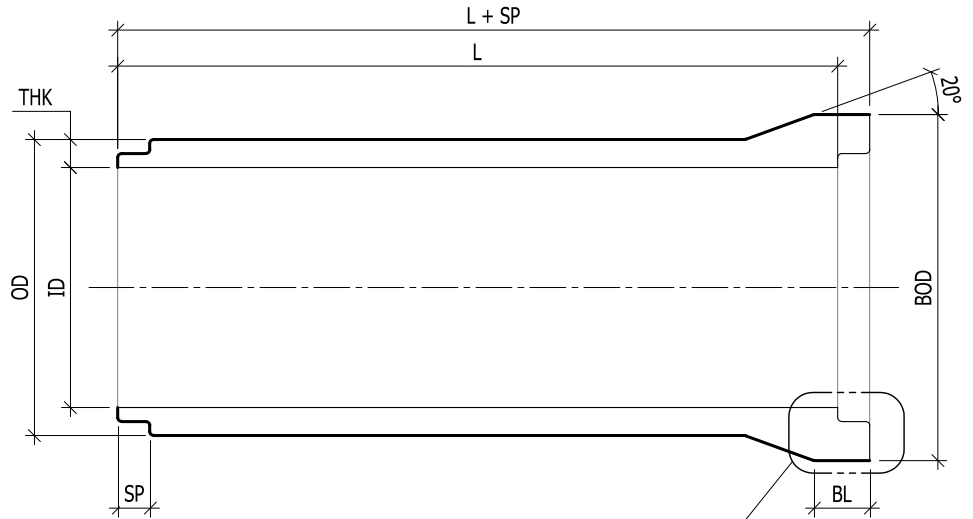


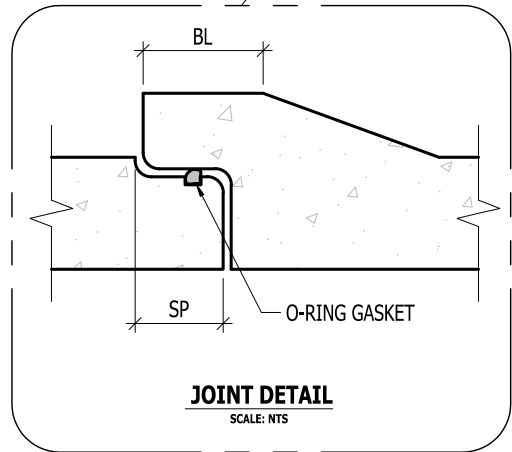
FRONT VIEW OF RCP PIPES
SCALE: NTS



SECTION A-A
SCALE: NTS

18" - 72" RCP (REINFORCED CONCRETE PIPE) DIMENSIONS*								
ID	THK	OD	BOD	BL	SP	L	L + SP	WT./FT
18"	2 1/2"	23"	27"	5 3/4"	3 1/2"	7'-6"	7'-9 1/2"	190 LBS
24"	3"	30"	35"	6 1/2"	3 1/2"	7'-6"	7'-9 1/2"	295 LBS
30"	3 1/2"	37"	43 1/4"	7"	4"	7'-6"	7'-10"	450 LBS
36"	4"	44"	51 1/4"	7 1/2"	4"	7'-6"	7'-10"	625 LBS
42"	4 1/2"	51"	58 1/2"	6 3/4"	4 5/8"	7'-6"	7'-10 5/8"	800 LBS
48"	5"	58"	62 1/2"	6 3/4"	4 3/4"	7'-6"	7'-10 3/4"	1010 LBS
54"	5 1/2"	65"	72 1/4"	7 1/2"	5"	7'-6"	7'-11"	1290 LBS
60"	6"	72"	76"	7 1/4"	5"	12'-0"	12'-5"	1395 LBS
72"	7"	86"	90"	7 1/2"	5"	12'-0"	12'-5"	1920 LBS

* LARGER DIAMETERS ARE AVAILABLE UPON REQUEST



DIMENSION DESCRIPTIONS	
DIM	DESCRIPTION
ID	NOMINAL INSIDE DIMENSION
THK	NOMINAL WALL THICKNESS
OD	NOMINAL OUTSIDE DIMENSION
BOD	BELL OUTSIDE DIMENSION
BL	BELL LENGTH OF STRAIGHT SECTION
SP	SPIGOT HEIGHT
L	INSIDE LENGTH BEFORE BELL (LAY LENGTH)
L + SP	APPROXIMATE OVERALL LENGTH (CALCULATED)
WT./FT	APPROXIMATE WEIGHT PER FOOT AVERAGE (INCLUDES BELL)

NOTES:

1. PIPE JOINTS AND GASKETS CONFORM TO ASTM C443 & C361
2. 36" THROUGH 72" PIPE AVAILABLE FOR ASTM C76 (REINFORCED) & ASTM C361 (REINFORCED LOW HEAD PRESSURE PIPE)
3. 18" THROUGH 48" PIPE AVAILABLE FOR ASTM C1765-13 STEEL FIBER REINFORCED
4. FURNISHED WITH CONFINED O-RING GASKET

