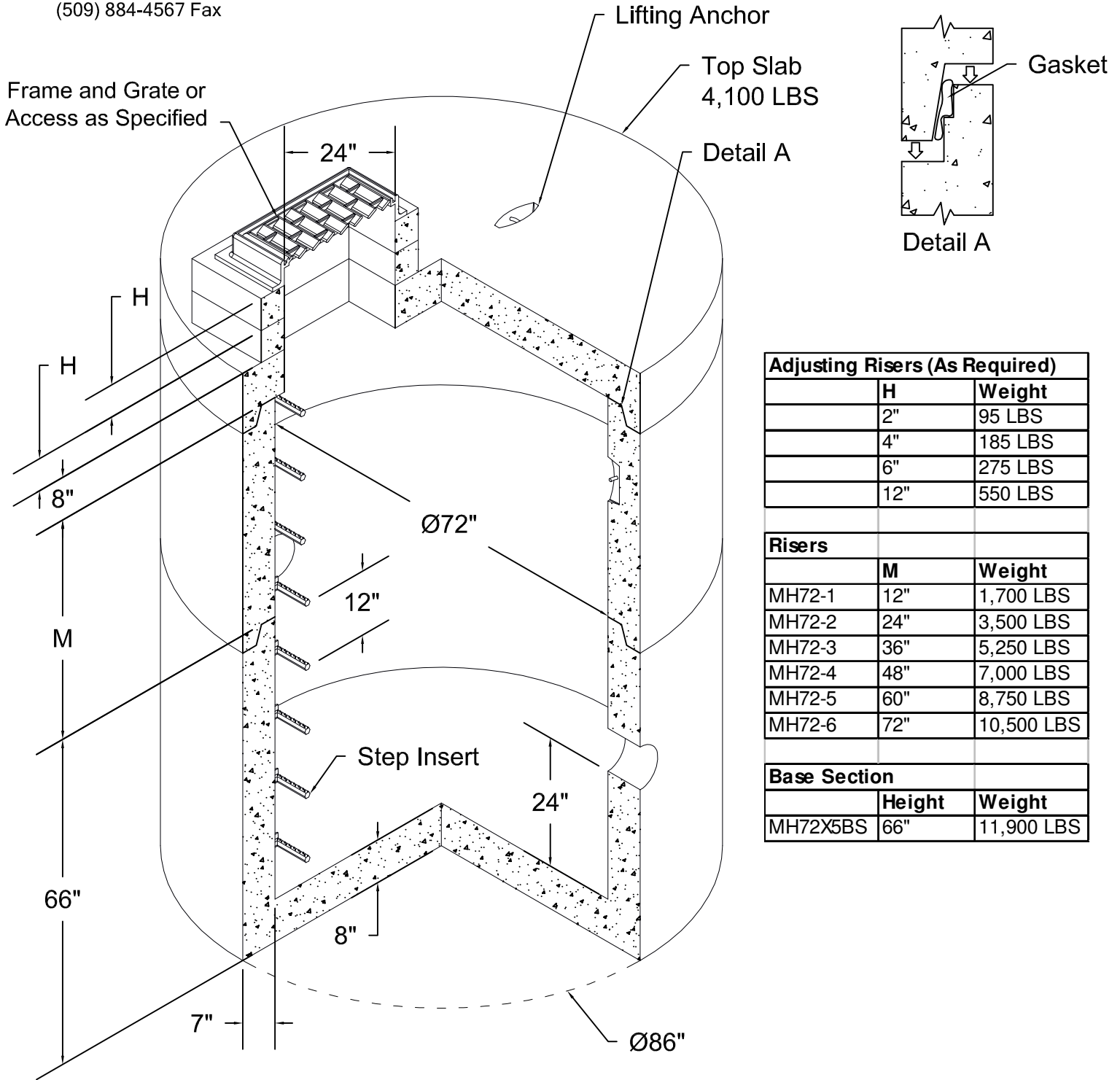


CONCRETE PRODUCTS

(509) 884-6644 Phone

(509) 884-4567 Fax



Adjusting Risers (As Required)		
	H	Weight
	2"	95 LBS
	4"	185 LBS
	6"	275 LBS
	12"	550 LBS
Risers		
	M	Weight
MH72-1	12"	1,700 LBS
MH72-2	24"	3,500 LBS
MH72-3	36"	5,250 LBS
MH72-4	48"	7,000 LBS
MH72-5	60"	8,750 LBS
MH72-6	72"	10,500 LBS
Base Section		
	Height	Weight
MH72X5BS	66"	11,900 LBS

Notes:

Catch basin assembly conforms to ASTM-C478/W.S.D.O.T./A.P.W.A. standard specifications and standard plans B-1e & B-1z. Maximum knockout size 48". Minimum Distance between Knockouts 8". All catch basin Joints sealed with mastic or rubber gasket.