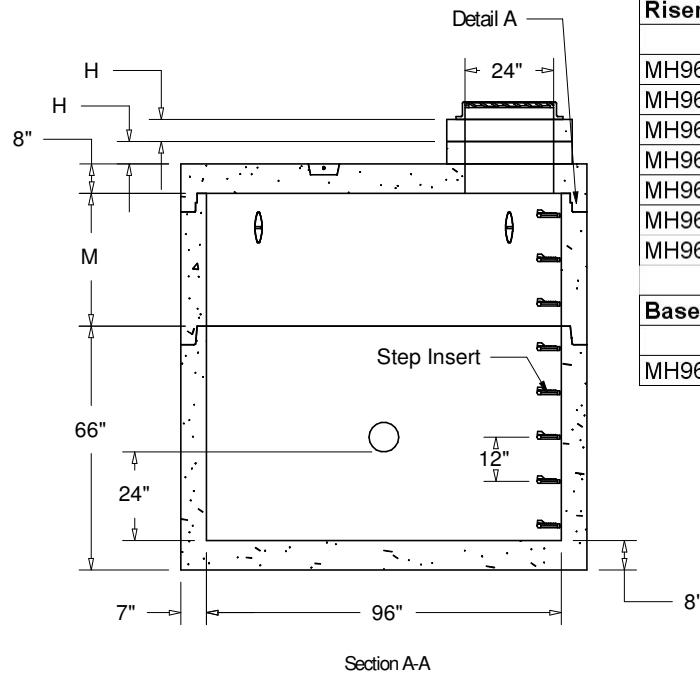
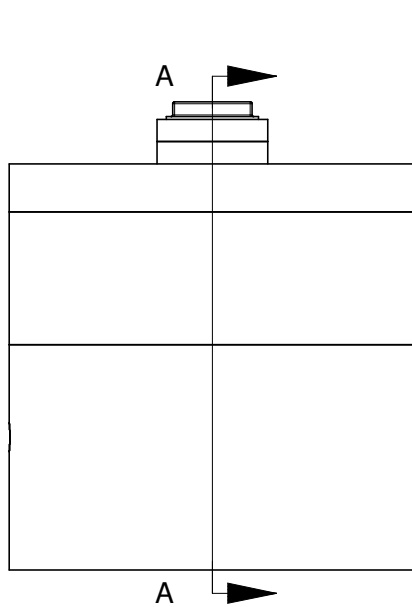


Adjusting Risers (As Required)		
	H	Weight
	2"	95 LBS
	4"	185 LBS
	6"	275 LBS
	12"	550 LBS

Risers		
	M	Weight
MH96-2	24"	4,600 LBS
MH96-3	36"	6,900 LBS
MH96-4	48"	9,200 LBS
MH96-5	60"	11,500 LBS
MH96-6	72"	13,800 LBS
MH96-7	84"	16,100 LBS
MH96-8	96"	18,400 LBS

Base Section		
	Height	Weight
MH96X5BS	66"	16,875 LBS



Notes:
 Catch basin assembly conforms with W.S.D.O.T./A.P.W.A. standard specifications and standard plans B-1e & B-1z.
 Maximum knockout size 48" Minimum distance between knockouts 8".
 All catch basin joints sealed with mastic or rubber gasket.