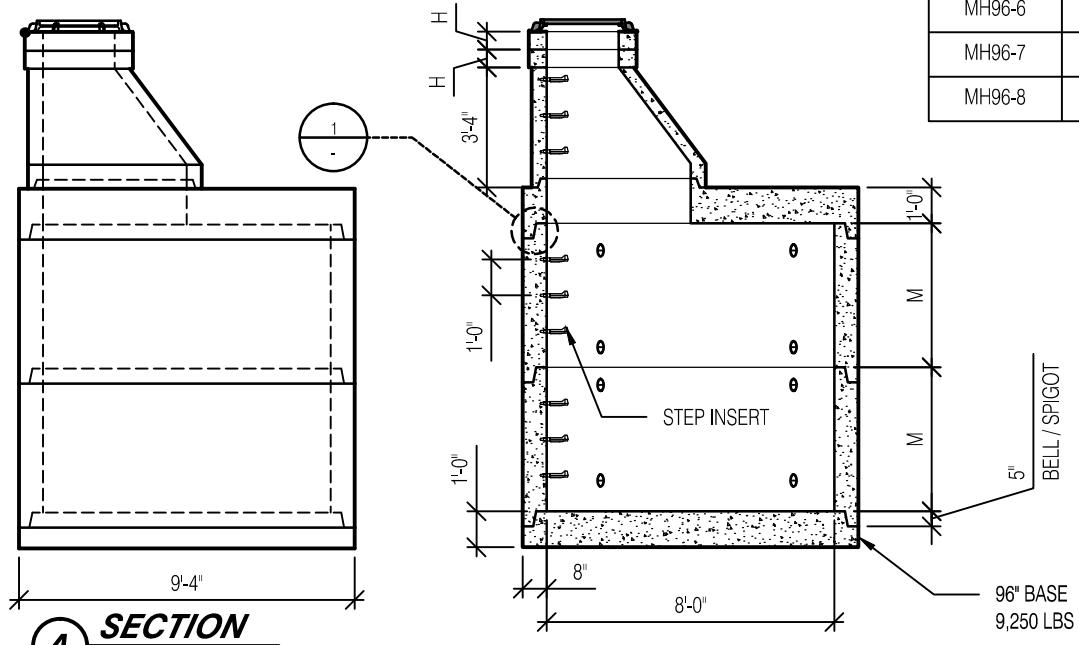


ADJUSTING RISERS (AS REQ'D.)

	"H"	WEIGHT
MAR24-2	2"	75 LBS
MAR24-4	4"	150 LBS
MAR24-6	6"	230 LBS

RISERS

	"M"	WEIGHT
MH96-2	24"	4,600 LBS
MH96-3	36"	6,900 LBS
MH96-4	48"	9,200 LBS
MH96-5	60"	11,500 LBS
MH96-6	72"	13,800 LBS
MH96-7	84"	16,100 LBS
MH96-8	96"	18,400 LBS



- NOTES:**
1. MANHOLE ASSEMBLY CONFORMS TO ASTM-C478/W.S.D.O.T./A.P.W.A. STANDARD SPECIFICATIONS
 2. ALL MANHOLE JOINTS SEALED WITH MASTIC OR RUBBER GASKET

S
A
N
I
T
A
R
Y

S
E
W
E
R